

Customer :

customer

Customer part :

customer part

Comment :

Comment

S1=0.17

S2=0.82

Tmax=442

Tp S2=481.0

PI=0.17

HI=102

Sample =10654.8

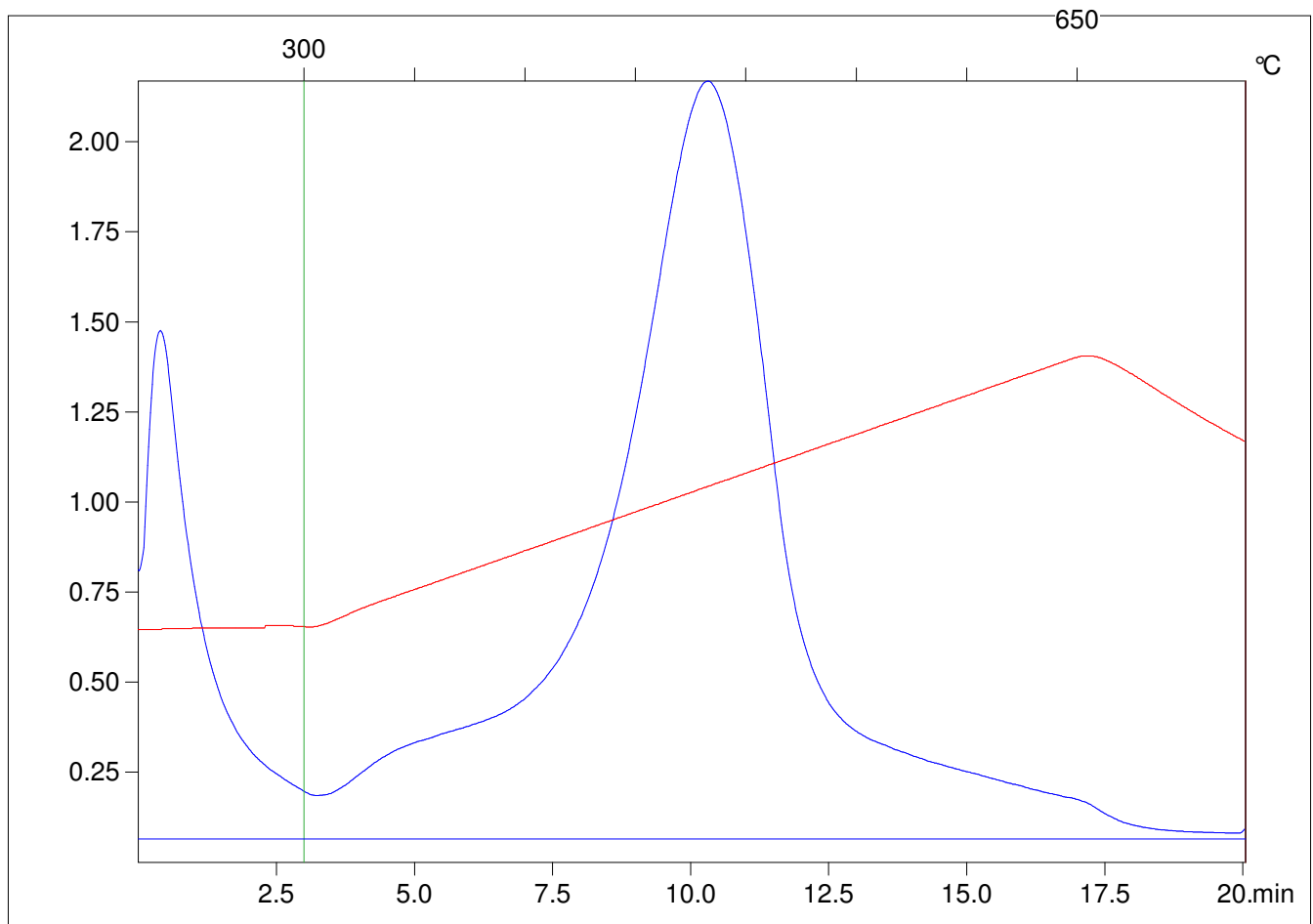
Method =Bulk Rock

Cycle=Basic

KFID(10\*9)=1167

Qty =70.7

TOC=0.8



C:\VINC\PK141015\PK091.R00 : FID pyrolysis graphic

State

Pyro Status

Oxi Status